

## Press Release (For Immediate Release)

23 July 2025

### 3812 Gallery Unveils a New Chapter at The Whiteley, London

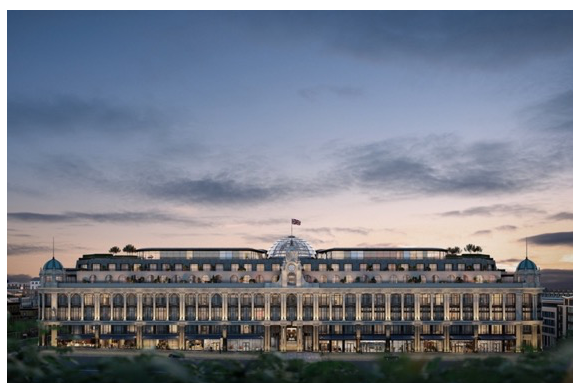
#### A Narrative of Cultural Reinvention & Cross-Cultural Connection

3812 Gallery is thrilled to announce the beginning of a new chapter: our London gallery is relocating to **The Whiteley** this **September**.

This move to The Whiteley – a historic Grade II listed landmark on Queensway – now transformed into a world-class residential and hospitality destination, marks a significant milestone in our rebranding and business development. The site's rich architectural and cultural legacy reflects our journey rooted in East-meets-West influences, as we continue to lead in artistic innovation and cultural exchange.

Founded in 2011 by Calvin Hui and Mark Peaker, 3812 began its journey in Hong Kong's Island South district, driven by a vision to promote Chinese contemporary art on a global scale. Those early days laid the foundation for our evolution into a pioneering force connecting Eastern artistic traditions with contemporary expression.

The relocation provides us with a unique opportunity to reinforce our profile and mission, bridging cultures and offering bespoke services for international collectors while fostering cross-cultural dialogue.



The Whiteley, a heritage landmark of historical significance, has been reimagined as a go-to place for luxurious indulgence and new home to 3812 Gallery London.

#### A Fresh Identity

##### LONDON

Unit 3, G/F, The Whiteley, 137 Queensway,  
London W2 4DB, England  
+44 203 982 1863  
london@3812cap.com

##### HONG KONG

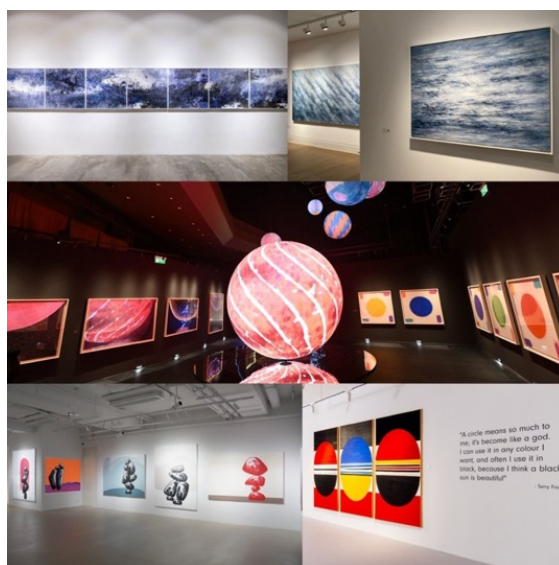
26/F, Wyndham Place, 44 Wyndham Street,  
Central, Hong Kong  
+852 2153 3812  
hongkong@3812cap.com

Accompanying our London opening is a new logo designed by Hong Kong artist another mountainman (Stanley Wong). Inspired by Suzhou numerals (花碼) from the Southern Song period, this contemporary redesign resonates with our philosophy and commitment to cultural reinvention.



## Strategic Positioning and Global Perspective

The vibrant Queensway and surrounding Bayswater neighbourhood marks a new era where tradition and innovation coexist. From our beginnings in Wong Chuk Hang to our cultural hub on Wyndham Street and our first international location in St. James's, Mayfair, 3812's journey reflects a strategic approach, seizing opportunities at the intersection of artistic and economic dynamics across Asia and Europe.



### LONDON

Unit 3, G/F, The Whiteley, 137 Queensway,  
London W2 4DB, England  
+44 203 982 1863  
london@3812cap.com

### HONG KONG

26/F, Wyndham Place, 44 Wyndham Street,  
Central, Hong Kong  
+852 2153 3812  
hongkong@3812cap.com

#### Highlights of Past Exhibitions:

Top: "Qī Shī" by Raymond Fung at Arts Pavilion of West Kowloon Cultural District in Hong Kong in 2023;  
"In Praise of Blandness" by Liu Guofu in London in 2022;  
Middle: "To Infinity and Beyond – The Art of Hsiao Chin" at "Art Macao: Macao International Art Biennale 2023"  
Bottom: "Wish Upon a Rock" by Ma Desheng in Hong Kong in 2024;  
"Here Comes the Sun: The Art of Terry Frost 1948-2003" in Hong Kong in 2021

While The Whiteley will serve as our London gallery, we aspire to be a cultural anchor for residents and visitors alike, presenting curated exhibitions, artist talks, and immersive experiences that foster artistic engagement.

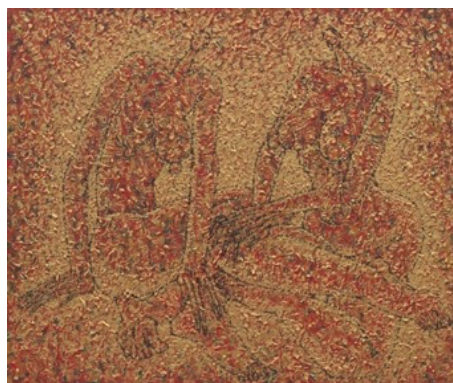
3812 has proudly showcased modern and contemporary Chinese artists whose works are held in prestigious institutions such as the Metropolitan Museum of Art, the Guggenheim, and the British Museum. Our represented artists include post-war abstract master Hsiao Chin, renown Paris-based artist Ma Desheng, and established Hong Kong ink artist Raymond Fung. Our upcoming exhibitions will feature a dynamic mix of established and emerging talents, promising unparalleled experiences that transcend cultural and medium boundaries.

#### Inaugural Exhibition

The inaugural exhibition "Woman" opens in September this year, celebrating Paris-based Chinese artist Ma Desheng's 45-year exploration of the female form across diverse media, honouring the strength and beauty of Mother Nature.



Ma Desheng, *Enchanting*, 2015  
Acrylic on canvas, 150 x 200cm



Ma Desheng, *Attachment*, 2013  
Acrylic on canvas, 200 x 240cm

Following this will be another mountainman's (Stanley Wong) first solo exhibition in London in October, showcasing his art practice over the past decades. Through his unique acute perspective, the exhibition reflects his love for Hong Kong and contemplation on contemporary social issues.

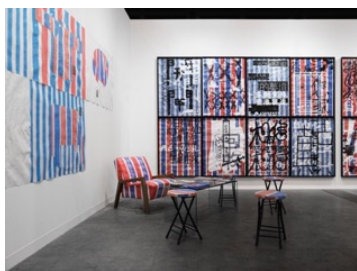
#### LONDON

Unit 3, G/F, The Whiteley, 137 Queensway,  
London W2 4DB, England  
+44 203 982 1863  
london@3812cap.com

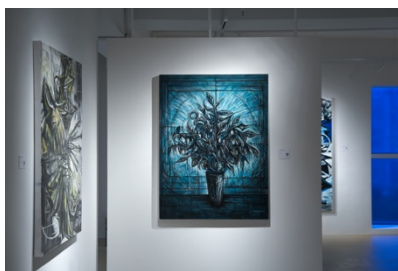
#### HONG KONG

26/F, Wyndham Place, 44 Wyndham Street,  
Central, Hong Kong  
+852 2153 3812  
hongkong@3812cap.com

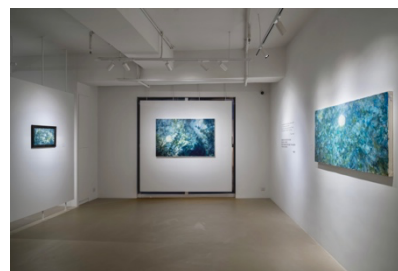
Another highlight will be a series featuring young artists, including Hong Kong-based Thomas Ngan and Nanjing-based Liu Yangwen, whose distinctive imagery invites viewers to reconsider their perceptions of nature.



anothermountainman's "Redwhiteblue" installations



Installation view of Liu Yangwen's solo exhibition "Forging the Wild" at 3812 Hong Kong Gallery in 2022



Installation view of Thomas Ngan's solo exhibition "We Dream for that Light" at 3812 Hong Kong Gallery in 2023

In this new chapter, 3812 will continue to foster dialogue between Asian and Western artists. Our vision is to create a unique platform where artists, collectors, and audiences from East and West converge, engaging in cultural dialogue and creative exchange, all driven by a commitment to timeless cultural reinvention.

Thank you for growing with 3812 Gallery over the past decade. We look forward to flourishing together in the years to come!

### 3812 Gallery London

**Address:** Unit 3, G/F, The Whiteley, 137 Queensway, London W2 4DB, England

**General Enquiry:** +44 (0)7765205596 / [london@3812cap.com](mailto:london@3812cap.com)

### Press Enquiry

Marie-Béatrice Morin (Public Relations)      [marie-b@mariebmorin.com](mailto:marie-b@mariebmorin.com)      +44 7809 316 295

Anastasia Anastasiadou  
(Sales and Business Development Manager)      [anastasia.a@3812cap.com](mailto:anastasia.a@3812cap.com)      +44 7765 205 596

Jenny Wang (Gallery Associate)      [jenny.wang@3812cap.com](mailto:jenny.wang@3812cap.com)      +44 7392 903 315

**Press Kit:** <http://bit.ly/40pvkNS>

**Artist info:** <http://bit.ly/3GWGz9J>

**Highlight Images:** <http://bit.ly/4IlZOCY>

#### LONDON

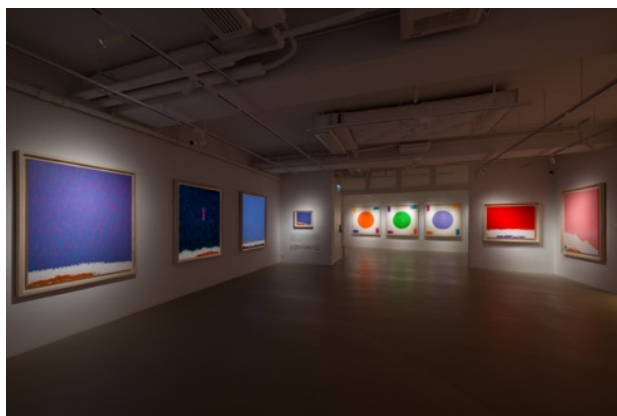
Unit 3, G/F, The Whiteley, 137 Queensway,  
London W2 4DB, England  
+44 203 982 1863  
[london@3812cap.com](mailto:london@3812cap.com)

#### HONG KONG

26/F, Wyndham Place, 44 Wyndham Street,  
Central, Hong Kong  
+852 2153 3812  
[hongkong@3812cap.com](mailto:hongkong@3812cap.com)

## ABOUT 3812 GALLERY

Co-founded by Calvin Hui and Mark Peaker, 3812 Gallery is a dynamic art space with locations in Hong Kong and London. In 2025, the London gallery relocates to a new and exciting destination, The Whiteley. 3812 represents both modern and contemporary Chinese artists, such as Hsiao Chin, a major post-war painter whose works can be found in prestigious institutions like M+ in Hong Kong and the Metropolitan Museum of Art in New York; and Ma Desheng, an internationally renowned Chinese artist based in Paris, who had a solo exhibition at Centre Pompidou in 2022. His works are collected by international institutions including Centre Pompidou, the British Museum, and M+ Museum. 3812 also highlights the significance of ink art, including the works of Raymond Fung from Hong Kong, whose works can be found in notable collections such as The Asian Art Museum of San Francisco and the Hong Kong Palace Museum. The gallery also represents Liu Guofu, a meticulous painter based in Nanjing, whose works are collected by Macau's MGM Chairman's Collection and the Shanghai Art Museum. 3812 continuously expands its artistic vision by working with contemporary artists from diverse genres. This includes celebrated Beijing-based artist Zhao Zhao, recipient of the Artist of the Year Award of Art China (AAC) in 2019, as well as the captivating porcelain creations of Li Hongwei, which have been collected by over 30 prominent institutions including the Art Institute of Chicago and the British Museum, among others.



## ABOUT THE WHITELEY

Occupying an entire city block on London's renowned Queensway – just moments away from Hyde Park, Notting Hill and Paddington, Whiteleys was created by William Whiteley in 1911 and was once claimed to be the world's largest emporium. Its majestic lobby staircase, modelled on Milan's La Scala, and its slogan 'everything from a pin to an elephant' drew shoppers from all over Britain. More details on The Whiteley's history is available [here](#).

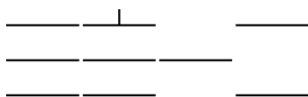
Over the past eight years, this London address of epic scale and proportion has undergone a complete re-imagining, forming the cornerstone of Queensway's regeneration into one of the capital's most dynamic new neighbourhoods. The Whiteley is now home to 139 unique residences, the UK's first Six Senses Hotel with 109-rooms, 60,000 sq. ft. of amenities and 19 handpicked commercial tenants. Development manager Valouran, alongside joint venture investment partners

### LONDON

Unit 3, G/F, The Whiteley, 137 Queensway,  
London W2 4DB, England  
+44 203 982 1863  
london@3812cap.com

### HONG KONG

26/F, Wyndham Place, 44 Wyndham Street,  
Central, Hong Kong  
+852 2153 3812  
hongkong@3812cap.com



3 8 1 2 GALLERY

---

W: 3812gallery.com

IG: @3812gallery

MARK and C C Land have led this redevelopment, with architecture by Foster + Partners. More information on [thewhiteleylondon.com](http://thewhiteleylondon.com) .

LONDON

Unit 3, G/F, The Whiteley, 137 Queensway,  
London W2 4DB, England

+44 203 982 1863

[london@3812cap.com](mailto:london@3812cap.com)

HONG KONG

26/F, Wyndham Place, 44 Wyndham Street,  
Central, Hong Kong

+852 2153 3812

[hongkong@3812cap.com](mailto:hongkong@3812cap.com)